



ARMA-CHEK JUNA

STRONG PROTECTION ON THE HIGH SEAS

A green circular badge with the word "NEW" in white, uppercase, sans-serif font.

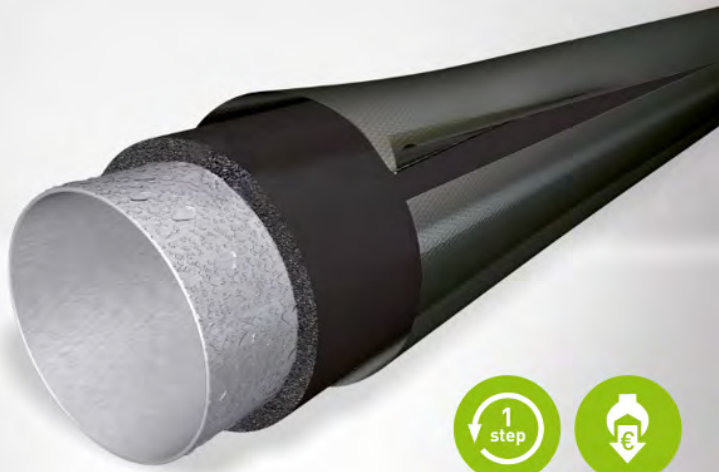
NEW



- IMO-certified insulation system for shipbuilding
- Pre-covered flexible insulation system with black aluminium facing
- Can be used on combustible and non-combustible pipes

- Small wall thicknesses due to very high surface emissivity factor
- Low weight and outstanding tear strength
- Excellent UV-resistance



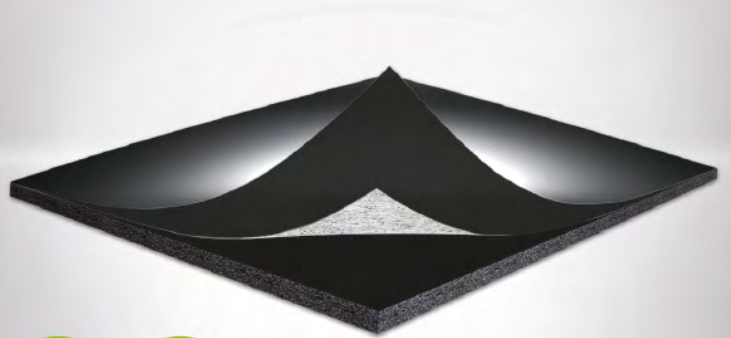


The cost-efficient one-step solution

Technical installations which are subject to mechanical stress should be covered to protect them against damage. Armacell's flexible covering systems not only provide tough protection against weathering, mechanical impact and corrosion under insulation (CUI), but also save time and money. Unlike traditional insulation materials and coverings, the precovered products can be installed in a single step. Arma-Chek Juna is UV-resistant and can be installed on combustible and non-combustible pipes.

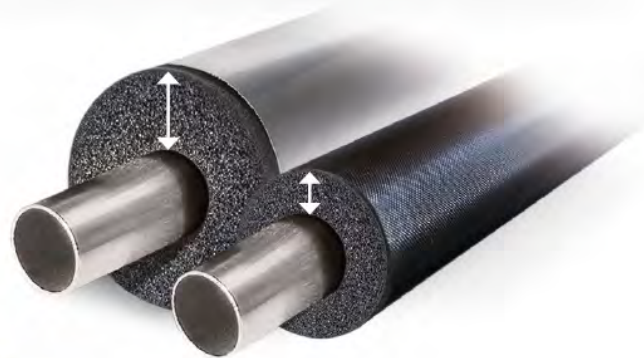
Optimal strength-to-weight ratio

The flexible incombustible covering is made of fibreglass fabric laminated with black aluminium. Thanks to its low bulk density and outstanding tear strength, Arma-Chek Juna is predestined for covering elastomeric and other insulation materials used in marine applications. In combination with Armaflex insulation it offers a perfect strength-to-weight ratio. Ships equipped with Armacell's lightweight solutions are less expensive to operate due to lower fuel demands.



Highly flexible and space saving

Due to its high flexibility Arma-Chek Juna ensures easy installation even in tight spaces on board vessels. What's more, compared to aluminium-clad insulation the lightweight product allows space-saving installation. As the black surface of the covering is highly absorptive, thinner insulation thicknesses can be specified. The emissivity factor indicates the relative ability of a material to emit energy by radiation. The higher this factor, the smaller the insulation thickness needed. When a bright shiny surface is used, the wall thickness of the insulation has to be increased significantly.



Ideal solution for python beverage tubing

Pythons are now state of the art for supplying beverages at low temperatures. They consist of a bundle of plastic tubes and cooling lines encased in insulation. The ArmaFlex insulation ensures that the desired medium temperature is maintained and prevents energy losses and condensation. The Arma-Chek Juna covering protects the surface of the python against mechanical impact, thus ensuring a long service life for the equipment.



Technical Data - Arma-Chek Juna

| | |
|-------------------|--|
| Brief description | Arma-Chek Juna innovative covering is, thanks to its low bulk density and outstanding tear strength, predestined for covering elastomeric insulations or other material types used in the ship industry. Arma-Chek Juna in combination with Armaflex insulation can be used on combustible and non-combustible substrates. |
| Material type | Insulation: highly flexible, closed-cell elastomeric foam material based on synthetic rubber. Covering: made of fiberglass fabrics laminated with black coloured aluminium facing. |
| Colour | black (covering) |
| Product Range | Arma-Chek Juna is available in a range of pre-covered tubes & sheets, as well as single covering. |
| Applications | Insulation and mechanical protection on cold service pipework/fittings for refrigeration systems everywhere onboard, and for pipework, fittings, air ducts and tanks insulation in cargo areas, mail rooms, baggage rooms and refrigerated compartments of service spaces, and exterior locations. |
| Assembly | The Armaflex and Arma-Chek installation manuals should be consulted before assembly. We offer special installation courses for the application of Arma-Chek. Please consult our Customer Service. |
| Remarks | Rough handling of the material can cause puckering on the surface. Creases and micro-cracks of the surface don't affect the functional properties of the covering. |

| Property | Value/Assessment | Test ^{*1} | Special Remark |
|--|--|---|--|
| Temperature Range | | | |
| Temperature Range ¹ | max. service temperature | +110 °C for substrate (+85 °C if sheet is glued to the object with its whole surface) (+550 °C for the jacketing) | Tested acc. to EN 14706 and EN 14707 |
| | min. service temperature ² | -50 °C | |
| Thermal Conductivity | | | |
| Thermal Conductivity | depends on used Armaflex substrate | | Declared acc. to EN ISO 13787 Tested acc. to EN 12667 EN ISO 8497 |
| Water vapour diffusion resistance | | | |
| Water vapour diffusion resistance | depends on used Armaflex substrate | | Tested acc. to EN 12086 and EN 13469 |
| Fire performance | | | |
| Reaction to fire | Pre-covered products | low-flammable | EU 7004 Tested according to IMO 2010 FTP Code, part 5 |
| | Covering; tape (fiberglass fabrics laminated with black coloured aluminium facing) | low-flammable | |
| Practical Fire Behaviour | Self-extinguishing, does not drip, does not spread flames | | |
| Other technical features | | | |
| Weight | approx. 240 g/m ² (covering) | | Tested according to EN 2286 |
| Material thickness | approx. 240 µm (0,24 mm) | | Tested according to EN 2286 |
| Resistance to mechanical impact | Good puncture and tear resistance. | | |
| UV resistance ³ | Excellent | | |
| Storage & Shelf life | Tape, self-adhesive: 1 year | | Can be stored in dry, clean rooms at normal relative humidity (50% to 70%) and ambient temperature (0 °C – 35 °C). |

1. When there are fluctuations in temperature, the surface may wrinkle slightly, as elastomeric products expand and contract in these circumstances. However, these superficial changes do not have any impact on the performance of the material. The wrinkles usually disappear as soon as the plant is heated to its original operating temperature.

2. For temperatures below -50 °C please contact our Customer Service Center to request for the corresponding technical information.

3. In outdoor applications the colour may fade. This does not have any impact on the functionality of the covering or the insulation material.

*1 Further documents such as test certificates, approvals and the like can be requested using the registration number given.

All data and technical information are based on results achieved under typical application conditions. Recipients of this information should, in their own interest and responsibility, clarify with us in due time whether or not the data and information apply to the intended application area. Installation instructions are available in our Arma-Chek installation manual.

Arma-Chek Juna tubes self-adhesive pre-covered



Length 1,0 , Color black

| Pipe max. Outside-Ø [mm] | Inner Ø min/ max mm | AF-3 | | | AF-5 | | |
|--------------------------|---------------------|---------------------------|-------------|----------|---------------------------|-------------|----------|
| | | Insulation thickness [mm] | Code | m/carton | Insulation thickness [mm] | Code | m/carton |
| 15 | 16,0 - 17,5 | 14,0 | AFJ-3-015 ● | 54 | - | - | - |
| 18 | 19,0 - 20,5 | 14,0 | AFJ-3-018 ● | 48 | 25,0 | AFJ-5-018 ● | 30 |
| 22 | 23,0 - 24,5 | 14,5 | AFJ-3-022 ● | 42 | 25,0 | AFJ-5-022 ● | 26 |
| 28 | 29,0 - 30,5 | 15,5 | AFJ-3-028 ● | 30 | 25,0 | AFJ-5-028 ● | 26 |
| 35 | 36,0 - 38,0 | 16,0 | AFJ-3-035 ● | 20 | 27,0 | AFJ-5-035 ● | 16 |
| 42 | 43,5 - 45,5 | 16,5 | AFJ-3-042 ● | 20 | 27,0 | AFJ-5-042 ● | 14 |
| 54 | 55,0 - 57,0 | 17,0 | AFJ-3-054 ● | 12 | 28,5 | AFJ-5-054 ● | 10 |
| 60 | 61,5 - 63,5 | 17,0 | AFJ-3-060 ● | 12 | 29,0 | AFJ-5-060 ● | 8 |
| 76 | 77,0 - 79,5 | 17,5 | AFJ-3-076 ● | 8 | 30,0 | AFJ-5-076 ● | 6 |
| 89 | 90,5 - 93,0 | 18,0 | AFJ-3-089 ● | 8 | 30,5 | AFJ-5-089 ● | 6 |
| 114 | 116,0 - 120,0 | 18,5 | AFJ-3-114 ● | 6 | 31,5 | AFJ-5-114 ● | 5 |
| 140 | 142,0 - 146,0 | - | - | - | 32,0 | AFJ-5-140 ● | 3 |

| Pipe max. Outside-Ø [mm] | Inner Ø min/ max mm | AF-6 | | | | | |
|--------------------------|---------------------|---------------------------|-------------|----------|---|---|---|
| | | Insulation thickness [mm] | Code | m/carton | | | |
| 15 | 16,0 - 17,5 | 32,0 | AFJ-6-015 ● | 22 | - | - | - |
| 18 | 19,0 - 20,5 | 32,0 | AFJ-6-018 ● | 22 | - | - | - |
| 22 | 23,0 - 24,5 | 33,5 | AFJ-6-022 ● | 20 | - | - | - |
| 28 | 29,0 - 30,5 | 35,0 | AFJ-6-028 ● | 16 | - | - | - |
| 35 | 36,0 - 38,0 | 35,0 | AFJ-6-035 ● | 14 | - | - | - |
| 42 | 43,5 - 45,5 | 36,5 | AFJ-6-042 ● | 10 | - | - | - |
| 48 | 49,5 - 51,5 | 37,5 | AFJ-6-048 ● | 8 | - | - | - |
| 54 | 55,0 - 57,0 | 38,0 | AFJ-6-054 ● | 8 | - | - | - |
| 60 | 61,5 - 63,5 | 39,0 | AFJ-6-060 ● | 6 | - | - | - |
| 76 | 77,0 - 79,5 | 40,5 | AFJ-6-076 ● | 5 | - | - | - |
| 89 | 90,5 - 93,0 | 41,5 | AFJ-6-089 ● | 4 | - | - | - |
| 114 | 116,0 - 120,0 | 43,0 | AFJ-6-114 ● | 4 | - | - | - |
| 140 | 142,0 - 146,0 | 44,5 | AFJ-6-140 ● | 2 | - | - | - |
| 168 | 170,0 - 174,0 | 45,0 | AFJ-6-168 ● | 2 | - | - | - |

Length tolerance for tubes +/- 1,5%
Thickness tolerance AFJ-3: ± 1,5 mm
 AFJ-5: ± 2,5 mm
 AFJ-6: ± 3,0 mm

● Item not in stock. Delivery on request. [MTO]

Arma-Chek Juna sheets pre-covered



Length 2,0m, Width 0,5m, colour Black

| Code | Insulation thickness [mm] | m ² /carton |
|------------|---------------------------|------------------------|
| AFJ-13MM ● | 13,0 | 9 |
| AFJ-19MM ● | 19,0 | 7 |
| AFJ-25MM ● | 25,0 | 5 |
| AFJ-32MM ● | 32,0 | 4 |

Length tolerance for sheets +/- 1,5%
Thickness tolerance for sheets 7 -19 mm: ±1,5 mm
 > 19 mm: ±2,0 mm

● Item not in stock. Delivery on request. [MTO]

Arma-Chek Juna covering endless



The flexible incombustible covering is made of fiberglass fabrics laminated with black coloured aluminium facing with a very high surface emissivity factor.

| Code | Width [mm] | Roll length [m] | Rolls/carton | m ² /carton |
|---------|------------|-----------------|--------------|------------------------|
| AJ-COAT | 980,0 | 50 | 1 | 49 |

Arma-Chek Juna tapes self-adhesive



Material: coated aluminium tape for ArmaChek system.

| Code | Width [mm] | Length [m] | Thickness [mm] | Rolls/carton |
|------------------|------------|------------|----------------|--------------|
| AJ-TAPE50 | 50,0 | 50 | 0,05 | 6 |

Arma-Chek Juna tapes self-adhesive beverage pipes



Material: aluminium/glasfiber tape for beverage pipes or adhesion on elastomeric foams. Suitable as repair tape.

| Code | Width [mm] | Length [m] | Thickness [mm] | Rolls/carton |
|--------------------|------------|------------|----------------|--------------|
| AJ-TAPE75-P | 75,0 | 50 | 0,30 | 8 |

Arma-Chek Juna accessories



| Code | Article description | Pieces/carton |
|--------------------|--|---------------|
| ACH-MASTICD | Mastic black. Sealing compound for installing Arma-Chek outdoors, 290 ml | 12 |
| ADH520/0,5E | Armaflex® adhesive 520, 0,5 liter cans | 12 |
| ADH520/1,0E | Armaflex® adhesive 520, 1,0 liter cans | 12 |
